

What makes our program unique?



Fall and spring picnic at Dr. Tranel's farm
+ Hayrides, horseback riding, and music



Interdisciplinary collaborations with translational and clinical applications
+ Opportunities to work with neurological and psychiatric patients



Long-running NIH supported training grant (T32) for 1st and 2nd year students
+ Fellowship incentive program
+ Program specific awards and fellowships



Student centered program, including student led committees

Diversity, equity, and inclusion

We believe that a **diversity** of student backgrounds, experiences, and perspectives adds to our graduate community.

>1/3 of our students are from diverse backgrounds, and **>1/2** of these students were appointed to the T32.

10 faculty from historically underrepresented backgrounds have been hired since 2016.

Average % underrepresented in entering class from 2016-2023



Underrepresented

Average % underrepresented on T32 from 2016-2023



Underrepresented

FOLLOW

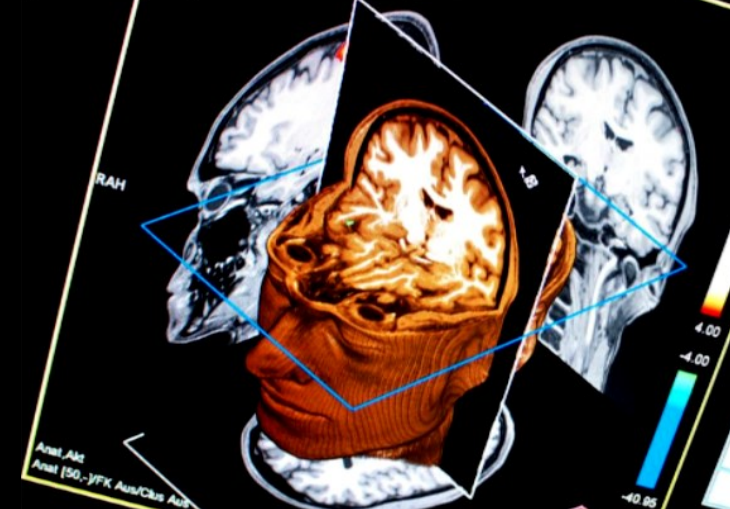


Contact us for more information:

grad-neuroscience@uiowa.edu



The University of Iowa prohibits discrimination in employment, educational programs, and activities on the basis of race, national origin, color, creed, religion, sex, age, disability, veteran status, sexual orientation, gender identity, or associational preference. The University also affirms its commitment to providing equal opportunities and equal access to University facilities. For additional information contact the Office of Equal Opportunity and Diversity, (319) 335-0705.



NEUROSCIENCE GRADUATE PROGRAM

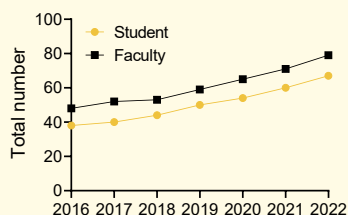
The University of Iowa has a long tradition as a leading center for study of the nervous system and behavior, and for the training of graduate students in this area.

IOWA

**Interdisciplinary Graduate
Program in Neuroscience**

Our program at a glance

Student and Faculty Growth

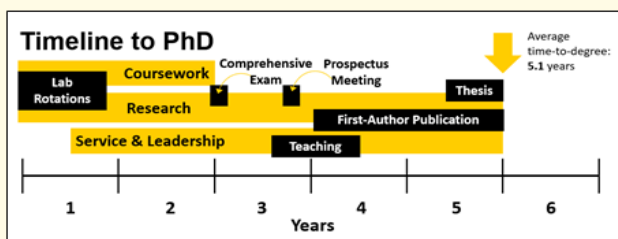


Average class size:
11.4 students

Total enrollment has
seen a **76% growth**
since 2016

Student Success

Time to degree



Productivity



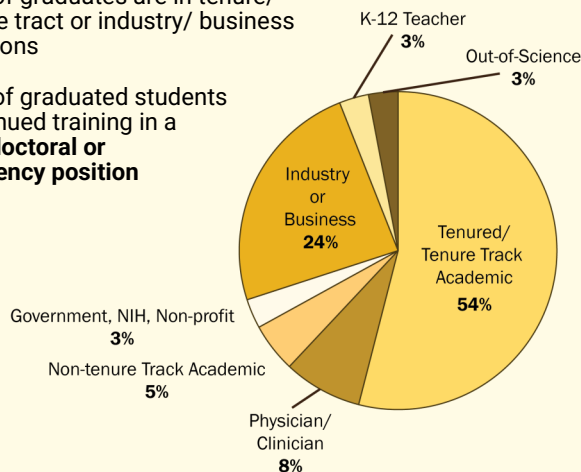
Average publications per student:
5.8 publications

Average first-author publications per
student: **2.4 publications**

Long-term Training Outcomes

78% of graduates are in tenure/
tenure tract or industry/ business
positions

88% of graduated students
continued training in a
**postdoctoral or
residency position**



What we offer



Teaching experiences:

Graduate teaching assistantships

* 1 semester required

Certificate in College Teaching



Flexible research focuses:

Collaboration centers:

- Hawkeye Intellectual & Developmental Disabilities Research Center
- Center for Neurodegeneration
- Center for Noninvasive Brain Stimulation
- Wellstone Muscular Dystrophy Specialized Research Center
- Sudden Death in Epilepsy Research Program
- Pain Research Program



Full financial support:

2024-25 stipend = **\$34,500**

* Typically increases \$1,000 each year

* Full tuition, fees, & health insurance =
\$53,000 full package

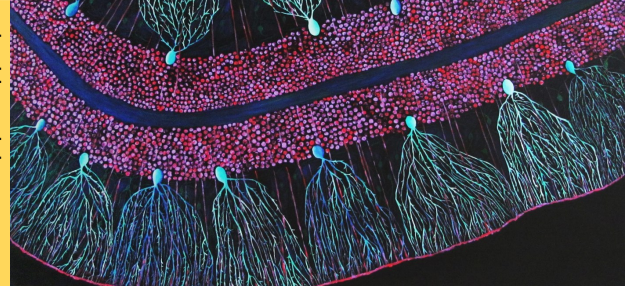


State-of-the-art facilities

- Central Microscopy Facilities
- Genome Editing Core
- MRI facility
- Iowa NeuroBank Core
- Biostatistics and Epidemiological Research Design Core
- Scientific Editing and Research Communication Core
- Iowa Neurological Patient Registry



kathleenslukaart.com



kathleenslukaart.com

HOW TO APPLY

You will need:

- ✓ Curriculum vitae (CV)
- ✓ 2 page personal statement
- ✓ 2 page research statement
- ✓ 3 letters of recommendation
- ✓ Unofficial transcript(s)
- * **International Students:**
TOEFL or IELTS scores

Application deadline

December 1st for best consideration

Final deadline: **January 1st**

Application fee

- **\$60** for U.S. students
- **\$100** for international students
- Fee waivers are available!
- Fees will be fully reimbursed if selected for interviews

**Application
details and link**

